



Guidelines for Excavations and Related Work

You are reminded to adopt whatever measures necessary (including but without limitation the following measures) to avoid any damage to our telecommunications plant at all times when you are carrying out your works. Please note that these measures are by no means exhaustive. You are required to implement and procure your personnel to implement any effective measures on-site as appropriate. You acknowledge that any interruption or damage to our plant will substantially affect our services provide to our customers. We shall hold you liable for any loss or damages whatsoever and however incurred to our plant as a result of your operations or works carried out. For any queries, please contact our Operation and Maintenance Control (OMC) at 2888 9889, or directly to our Plant Protection Officer as appropriate.

- It is of paramount importance that you have a good understanding of our plant at or near the site. Please make sure that you make due reference to the plans obtained from us indicating the approximate locations of our existing or proposed underground plant in the areas of your proposed excavations (see attached). From time to time, you should liaise with our OMC about the current marked up plans as appropriate in the process of your excavation.
- Please note that the depth and alignment of the plant may vary for various reasons, for instance, roadworks projects such as road widening or change of plant locations by other parties without our consent. Our underground ducts and cables may be found at a depth of some 4 metres (or over). Our network provides vital communications across the world and you acknowledge that any interruption or damage will affect our services in all aspects.
- It is of paramount importance that you locate our plant before excavations. Please make sure that you and your workers locate our plant before excavations. A non-destructive locator has to be used to locating the plant positions in conjunction with the marked-up plans and hand-dug trial holes. You are required to expose and support our plant before excavations. If any ducts or cables cannot be found as those shown in the marked-up plans, you should not proceed with your excavations (e.g. sheet piling works) but to contact our OMC or Plant Protection Officer as soon as possible.
- It is of paramount importance for you to ensure that your workers and personnel follow all procedures and good practices. You should make sure that all necessary information including marked-up plans and working instructions are communicated and passed to them in a timely manner. They have to fully take care of our plant including but not limited to providing adequate support and display of warning posters on-site during excavation. Please refer to the typical method of our plant support in Drawings EX UG 167, 168 and 169 as attached. In any circumstances, you should not move and do anything to our plant without obtaining our consent in advance. Please contact OMC or Plant Protection Officer in this regard in all cases.
- It is of paramount importance to ensure all your site people (e.g. supervisors, workers etc) are communicated and provided with adequate information about our plant and necessary precautionary measures are taken. Please make sure that they are kept informed at all times and any updated information is provided to them during your daily or regular meetings.

Please do not hesitate to call us if you have any queries. Your help would be very much appreciated.

In case of any inconsistency between the English version and the Chinese version, the English version shall prevail.

挖掘 及其相關工程之工作指引

當施工期間，閣下必須採取一切恰當的預防措施〔包括但不限於下列所述措施〕，以防止本公司的通訊網絡受破壞。請注意下列措施並非詳盡無遺，閣下應該明白到任何干擾或破壞，都會影響本公司的服務質素。倘若本公司的網絡因閣下之工程而引致任何損毀，閣下須賠償本公司的一切損失。如有任何疑問，請致電**2888 9889**與本公司戶外控制及維修中心聯絡，或直接聯絡我們的網絡保護主任。

- 閣下必須清楚了解工地及其相關範圍埋有本公司的地下設施。在施工前，閣下必須要向本公司索取最新地下設施圖則，此圖則提供本公司現有或擬鋪設的地下設施大概位置〔見附件〕。而在工程進行期間，閣下應該不時與本公司的戶外控制及維修中心保持緊密聯絡，方便掌握地下設施的最新情況。
- 閣下必須明白本公司地下設施的埋藏深度和位置，會受到不同因素影響而與紀錄有所差異。例如，道路拓寬工程或第三者在沒有得到本公司同意之下，而擅自更改設施的位置。我們的地下管道和電纜，埋藏深度有可能達到四米或以上。閣下亦應明白本公司的通訊網絡，覆蓋全球，任何中斷或損壞，將造成無可估計的影響。
- 閣下必須掌握本公司地下設施的正確位置。在挖掘工程展開前，確保工作人員先行根據圖則，結合無破壞性地下管綫定位儀和以人手挖探孔方式以確定本公司地下設施的正確位置，當埋藏於地下設施外露時，應加以承托及支撐。如果在現場無法找到圖則上標示的任何管道或電纜，切勿強行進行任何的鑽挖工程〔例如，打鋼板樁工程等〕，並盡快聯絡本公司的戶外控制及維修中心或網絡保護主任要求提供協助。
- 閣下必須確保你本人以及工作人員嚴格依循所有正確挖掘程序和方法。在施工過程中，閣下必須確保所有相關資料，包括地下設施圖則和工作指引，及時發放給有關工作人員。工作人員必須小心保護本公司的設施，包括：在工地範圍內張貼警告性海報，和對設施進行適當支撐和保護等。閣下及閣下之工作人員可以參考附件 **EX UG 167, 168 及 169** 所建議的保護方法。在任何情況下，未獲得本公司的同意，不得移動本公司任何設施。如有需要，請聯絡我們的戶外控制及維修中心或網絡保護主任。
- 閣下必須確保所有工地人員，包括主管、工人等，在施工前均已得到適當訊息，並依程序採取相應安全措施去保護我們的設備。請在日常或定期會議上，發佈本公司最新的地下設備圖則或資料與有關工作的人仕。

如有任何疑問，請致電給我們，本公司非常感激閣下的協助。

中、英文版本內容如有不符，概以英文版本為準。

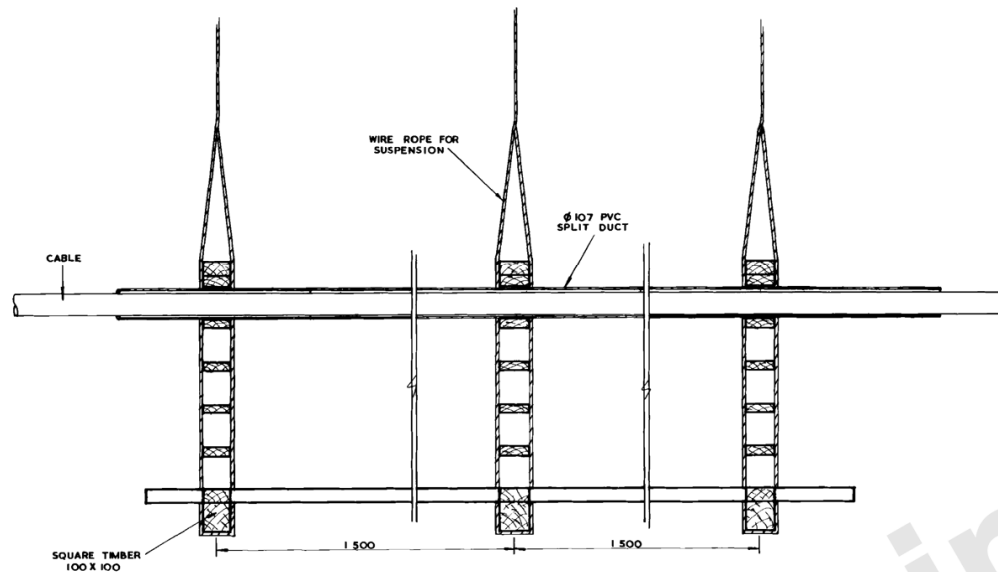
DO NOT SCALE

1ST ANGLE PROJECTION

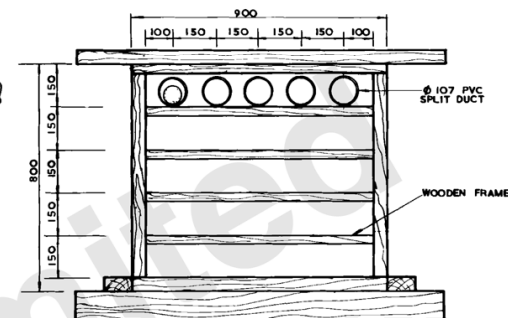
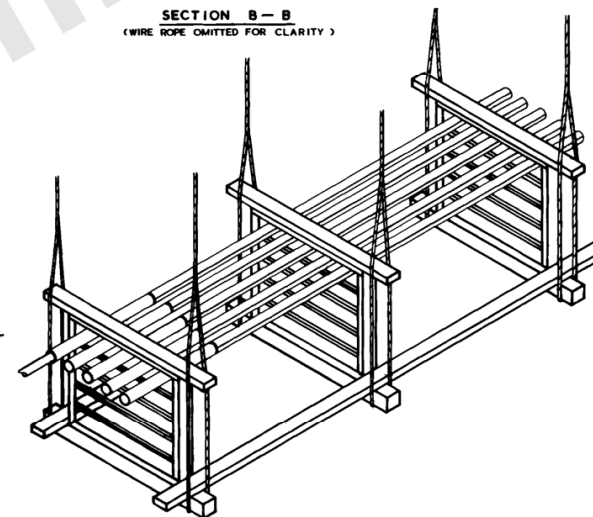
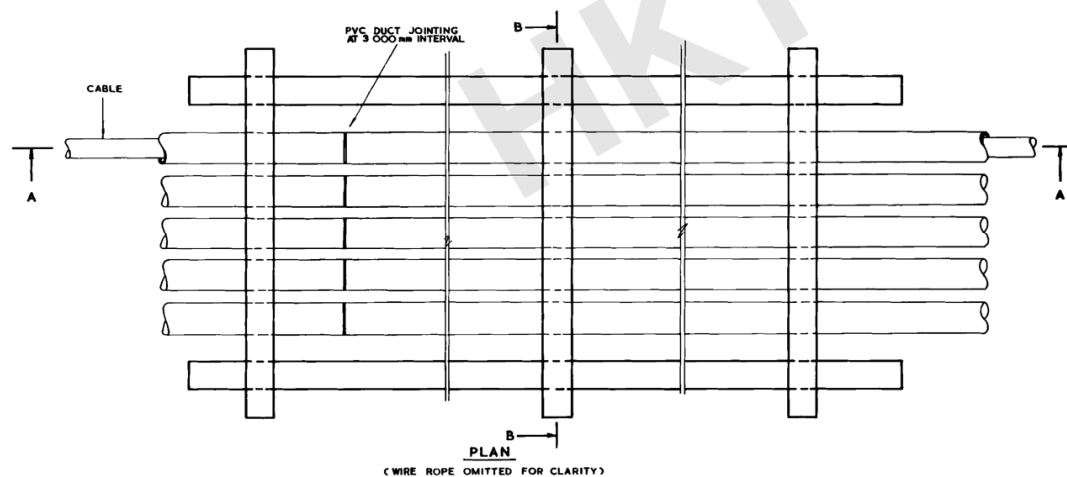
ISSUE

AMENDMENT

- CWT -



SECTION A - A

SECTION B - B
(WIRE ROPE OMITTED FOR CLARITY)

ISOMETRIC VIEW

Controlled Copy

ALL DIMENSIONS IN mm

m

FILE

POCKET

HKT

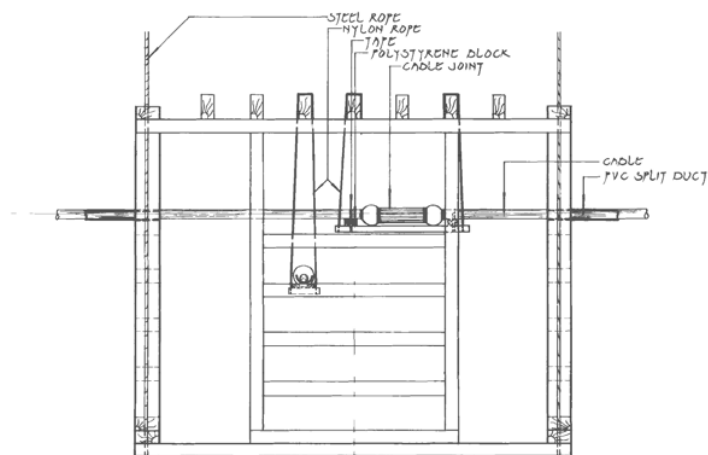
TYPICAL METHOD OF SUPPORTING HK TELECOM CABLES

SCALE 1 : 10

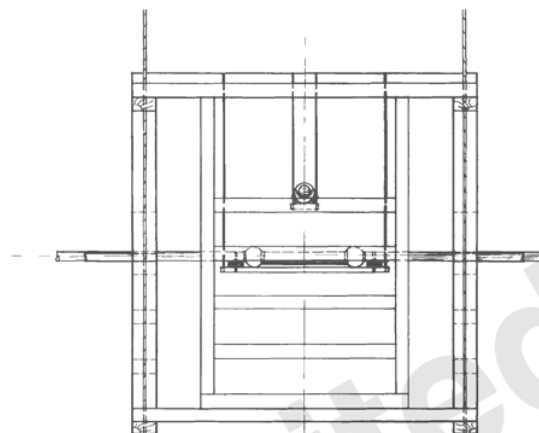
DWG No

EX UG 167

2	TITLE REVISED WAS HKT
14.9.92	EPW 3/1 UPDATED TO MN/D/P
6.10.86	SKP 1/K ₁ 180
	RENUMBERED WAS EX UG 172 FKC/ 18.1.76
1	SHEET REDRAWN & RENUMBERED WAS M (MTR) 5/76 FKC/ 18.1.76
21.12.77	DIVISION / DEPT / GROUP
REF	EP / DP
DRN	DRN
CKD	CKD
APPD	APPD
DATE	21.12.77



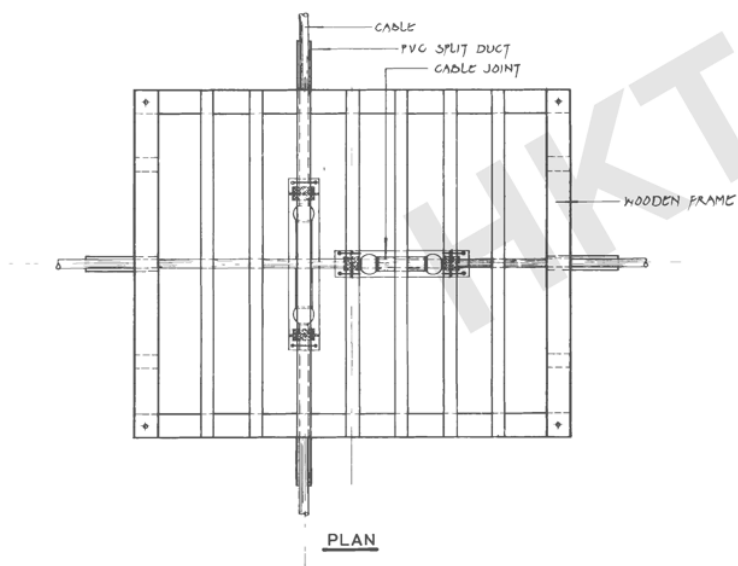
ELEVATION



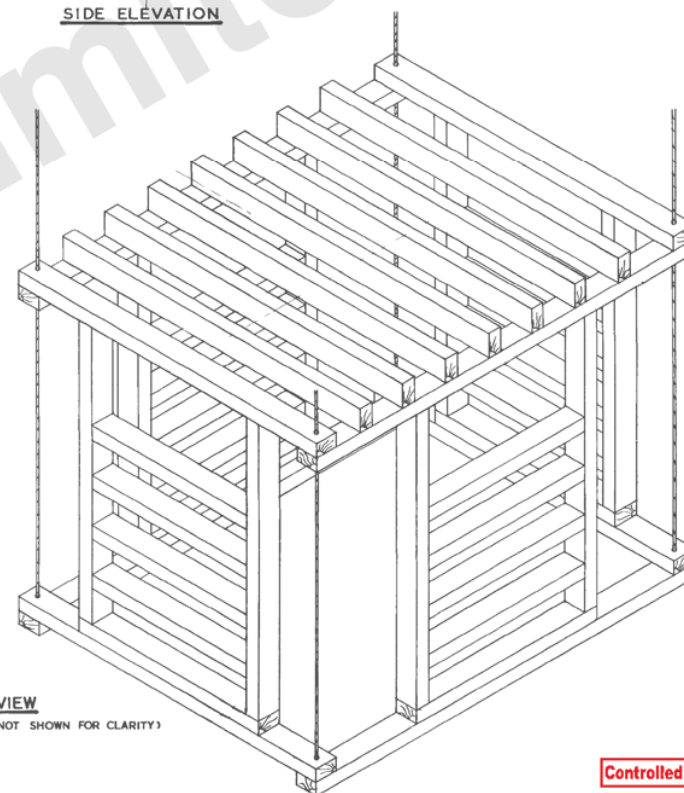
SIDE ELEVATION

NOTE

THE SIZE OF THE CABLE SUPPORTING FRAME
WILL BE DETERMINED ON SITE



PLAN

ISOMETRIC VIEW

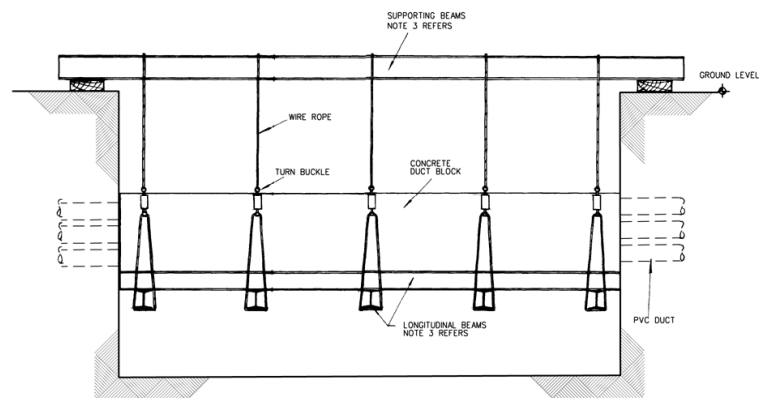
(DUCT CABLE & CABLE JOINT NOT SHOWN FOR CLARITY)

NOT TO SCALE

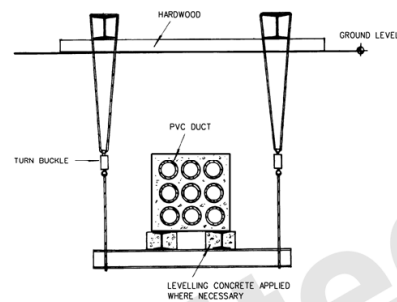
Controlled Copy



2	TITLE REVISED WAS WRIC
149 92	SEP 1982
—	EPW 3/1 UPDATE TO MN/D
61086	SEP 1982
/	RENUMBERED WAS ER 107 17
/	FKCJ 1081
/	RENUMBERED WAS M1878 of
/	CHRG 1 10/1/82
1	
0472	KPH/
	DIVISION / DEPT / GROUP
REF	EPIDP
DRN	
CKD	10/1/82
APPD	10/1/82
AUTH	10/1/82
DATE	20.7.78



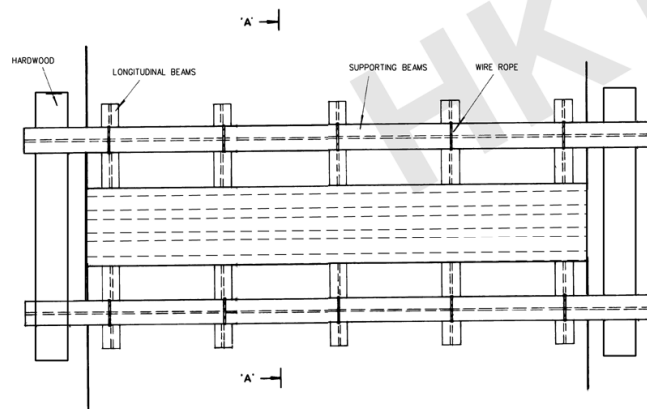
ELEVATION



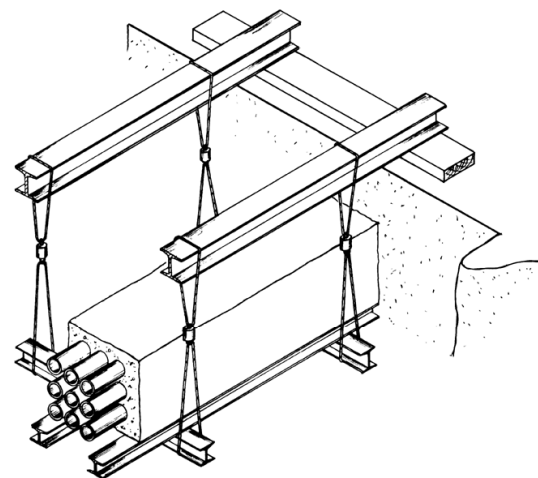
SECTION A - A

NOTES

1. TYPICAL METHOD OF SUPPORTING MANHOLW.
DWG No EX UC 170 REFERS
2. CONTINUOUS SUPPORT TO BE MAINTAINED ON
UNDERSIDE OF DUCT AT ALL TIMES.
3. QUANTITY AND SIZE OF THE SUPPORTING BEAMS,
AND LONGITUDINAL BEAMS WILL BE GOVERNED BY THE
WEIGHT AND SIZE OF DUCT BLOCK.
4. MAX. DISTANCE BETWEEN SUPPORTS IS 1.5 METRES.



PLAN



ISOMETRIC VIEW

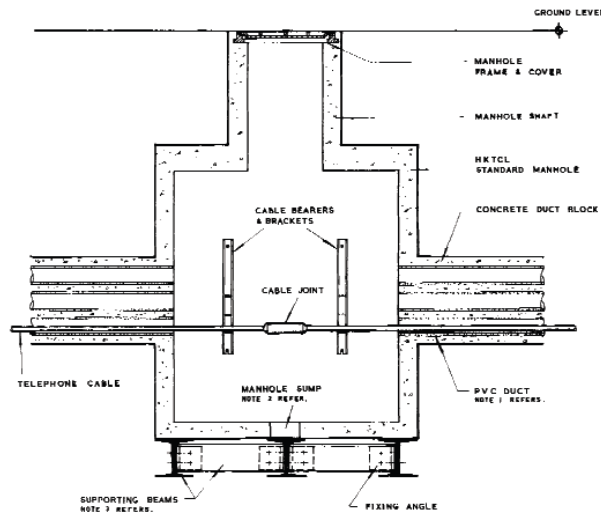
Controlled Copy

DO NOT SCALE

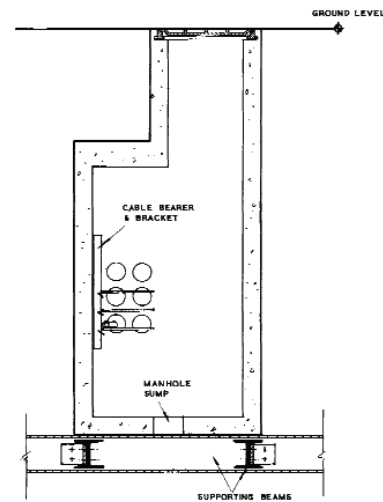
1ST. ANGLE PROJECTION

ISSUE

AMENDMENT



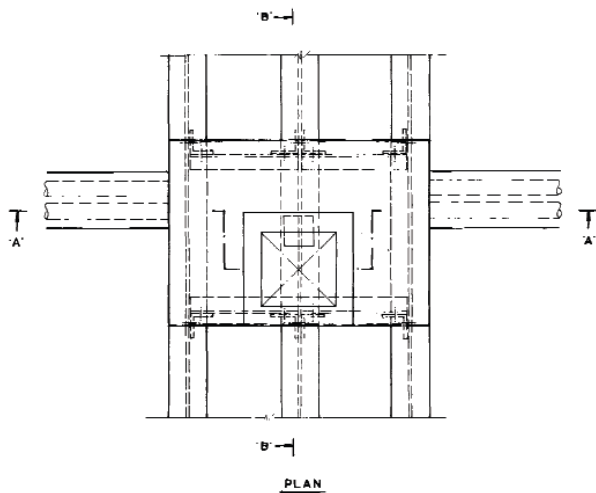
SECTION A-A



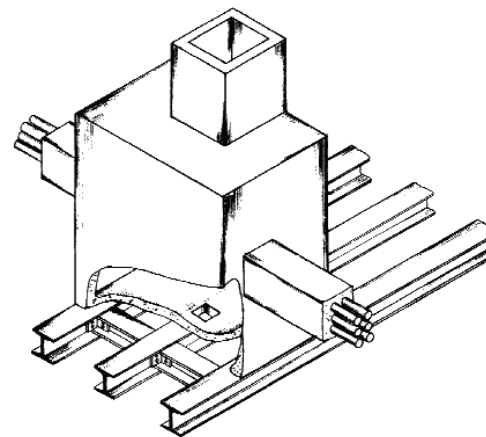
SECTION B-B

NOTES

1. TYPICAL METHOD OF SUPPORTING DUCT DWG. NO. EX UG 169 REFERS.
2. SUMP OF MANHOLE TO BE REMOVED TO ALLOW FREE DRAINAGE OF WATER.
3. QUANTITY AND SIZE OF THE SUPPORTING BEAMS WILL BE GOVERNED BY THE WEIGHT AND SIZE OF MANHOLE.
4. ACCESS FOR EMERGENCY CABLE WORK TO BE MAINTAINED AT ALL TIMES.
5. SUSPENSION SYSTEM FOR BEAMS TO BE DESIGNED IN ACCORDANCE WITH SITE CONDITIONS.



PLAN



ISOMETRIC VIEW

ALL DIMENSIONS IN MM

Controlled Copy

m

	EPW 3/1 UPDATED TO MN/DH
6 10 86	SKP 1/1/86 1/86
2	CONCRETE DUCT IS SUPERSEDED BY USING PVC DUCT
28.5.81	See 1/1/86 1/86
1	
15-12-77	Chen 1
	DIVISION / DEPT / GROUP
	REF. M.N/D.D
	DRN Chen 1/1/86 1/86
	CKD Chen 1/1/86 1/86
	APPO Chen 1/1/86 1/86
	DATE 15-12-77

FILE	POCKET	HKT	TYPICAL METHOD OF SUPPORTING MANHOLES	SCALE 1:20	DWG. NO. EX UG 170
------	--------	-----	---------------------------------------	------------	--------------------

***Please call* Cable Maintenance Centre
*before you dig***

We are always ready to help you

Day-time Telephone : 2888 9889

Night-time Telephone : 109



Optical Fibre Cable / Telephone Cable

進行**挖掘工程前**
請**先致電**電纜保養中心
我們樂意為你提供協助

日間電話：2888 9889

晚間電話：109



Warning Sticker No. 1: to be Stuck on Working Site as Required 警告貼紙一號：依要求貼在工地現場



**要掘地，請小心
光纖毀，影響深**

**Please excavate carefully
Huge impact if optical fibre cable is damaged**

掘地前請聯絡戶外運作維修控制中心
電話 2888 9889 提供協助

Please contact Operations & Maintenance Control
on hotlines: 2888 9889 before excavation



電訊盈科集團成員

Warning Sticker No. 2 : to be Stuck on Working Site as Required 警告貼紙2號：依要求貼在工地現場

HKT
摯誠為你

小 心
CAUTION!

地下有電訊電纜
Telecom Cable Below



電訊盈科集團成員

Attachment 10
Photos of Services of HKT

<p>Photo No. 1 - (Polyethylene Duct: I.D. 22, 30 & 40mm) General Burial Depth : 300~450mm in Footway / 900mm in Carriageway</p> 	<p>Photo No. 2 - (Concrete Duct: I.D. 102mm / I.D. 107mm PVC Split Duct) General Burial Depth : 300~450mm in Footway / 900mm in Carriageway</p> 
	
<p>Photo No. 3a - (PVC Duct: I.D. 56, 70 & 107mm) General Burial Depth : 300~450mm in Footway / 900mm in Carriageway</p>	<p>Photo No. 3b - (PVC Duct: I.D. 56, 70 & 107mm) General Burial Depth : 300~450mm in Footway / 900mm in Carriageway</p>

Attachment 10
Photos of Services of HKT

<p>Photo No. 3c - (PVC Split Duct: I.D. 107mm) General Burial Depth : 300~450mm in Footway / 900mm in Carriageway</p>	<p>Photo No. 3d - (PVC Split Duct: I.D. 107mm) General Burial Depth : 300~450mm in Footway / 900mm in Carriageway</p>
	
	
<p>Photo No. 3e - (G.S. Duct: I.D. 53 & 105mm) General Burial Depth : 300~450mm in Footway / 900mm in Carriageway</p>	<p>Photo No. 3f - (Fiberglass Reinforced Epoxy FRE Duct: I.D. 102mm) General Burial Depth : Suspended on Footbridge/Road bridge</p>

Attachment 10
Photos of Services of HKT

<p>Photo No. 4a - (PVC Bend Duct 10° & 20° : I.D. 107 mm) General Burial Depth : 300~450mm in Footway / 900mm in Carriageway</p> 	<p>Photo No. 4b - (PVC Bend Duct 10° & 20° : I.D. 107 mm) General Burial Depth : 300~450mm in Footway / 900mm in Carriageway</p> 
	
<p>Photo No. 4c - (PVC Bend Duct 90° : I.D. 56, 70mm) General Burial Depth : 300~450mm in Footway / 900mm in Carriageway</p>	<p>Photo No. 4d - (PVC Bend Duct 90° : I.D. 107 mm) General Burial Depth : 300~450mm in Footway / 900mm in Carriageway</p>

Attachment 10
Photos of Services of HKT

Photo No. 5a - (Cables)
Inside Jointing Chamber



Photo No. 5b - (Cables)
Inside Jointing Chamber







Photo No. 6a - (Cable Joint)
Inside Jointing Chamber



Photo No. 6b - (Cable Joint)
Inside Jointing Chamber

Attachment 10
Photos of Services of HKT

<p>Photo No. 7a - (Footway Joint Box – Concrete Type) No. of Cover: 1</p>	<p>Photo No. 7b - (Footway Joint Box – Concrete Type) No. of Cover: 1</p>
	
	
<p>Photo No. 7c - (Footway Joint Box – Concrete Type) No. of Cover: 2</p>	<p>Photo No. 7d - (Footway Joint Box – Concrete Type) No. of Cover: 3</p>

Attachment 10
Photos of Services of HKT

Photo No. 7e - (Footway Manhole – Concrete Type)
No. of Cover: 1



Photo No. 8a - (Footway Manhole – Concrete/Cast Iron Type)
No. of Cover: 1





Photo No. 8b - (Carriageway Manhole – Concrete/Cast Iron Type)
No. of Cover: 1



Photo No. 8c - (Carriageway Manhole – Concrete/Cast Iron Type)
No. of Cover: 1

Attachment 10
Photos of Services of HKT

<p>Photo No. 8d - (Carriageway Joint Box – Concrete/Cast Iron Type) No. of Cover: 1</p>	<p>Photo No. 8e - (Carriageway Joint Box – Concrete/Cast Iron Type) No. of Cover: 2-3</p>
	
	
<p>Photo No. 9a - (Single Shaft Carriageway Manhole – Cast Iron Type) No. of Cover: 2</p>	<p>Photo No. 9b - (Dual Shaft Carriageway Manhole – Cast Iron Type) No. of Cover: 4</p>

Attachment 10
Photos of Services of HKT

Photo No. 9c - (Carriageway Joint Box – Cast Iron Type)
No. of Cover: from 4



Photo No. 9d - (Carriageway Joint Box – Cast Iron Type)
No. of Cover: 6







Photo No. 9e - (Carriageway Joint Box – Cast Iron Type)
No. of Cover: 4



Photo No. 9f - (Carriageway Joint Box – Cast Iron Type)
No. of Cover: 6

Attachment 10
Photos of Services of HKT

<p>Photo No. 10a - (Footway Joint Box – Recessed Type) No. of Cover: 1</p>	<p>Photo No. 10b - (Footway Joint Box – Recessed Type) No. of Cover:2</p>
	
	
<p>Photo No. 10c - (Footway Joint Box – Recessed Type) No. of Cover:3</p>	<p>Photo No. 10d - (Footway Joint Box – Recessed Type) No. of Cover:5</p>

Photos of Services of HKT

Photo No. 10e - (Footway Manhole – Recessed Type)
No. of Cover: 2

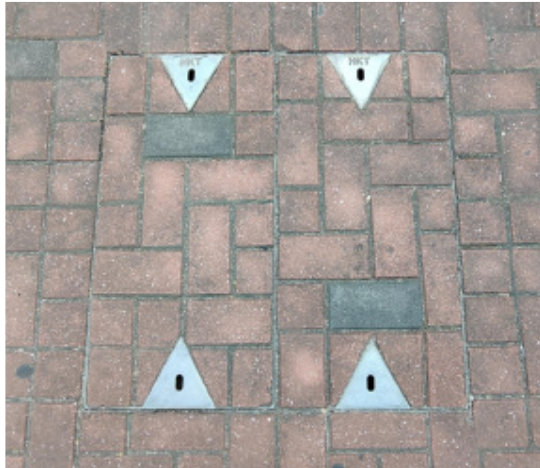


Photo No. 10f - (Footway Manhole – Recessed Type)
No. of Cover:2



Photo No. 11a - (Joint Box – Plastic Type)
No. of Cover:1



Photo No. 11b - (Joint Box – Plastic Type)
No. of Cover:1

Attachment 10
Photos of Services of HKT

Photo No. 12a - (Company Logo)
on Each Manhole/Joint Box Cover



Photo No. 12b - (Company Logo)
on Each Manhole/Joint Box Cover



Photo No. 12c - (Company Logo)
on Each Manhole/Joint Box Cover



Photo No. 12d - (Company Logo)
on Each Manhole/Joint Box Cover

Attachment 10
Photos of Services of HKT

Photo No. 12e - (Company Logo)
on Each Manhole/Joint Box Cover



Photo No. 12f - (Company Logo)
on Each Manhole/Joint Box Cover



Photo No. 12g - (Company Logo)
on Each Manhole/Joint Box Cover



Photo No. 12h - (Company Logo)
on Each Manhole/Joint Box Cover

Attachment 10
Photos of Services of HKT

Photo No. 12i - (Company Logo)
on Each Manhole/Joint Box Cover



Photo No. 12j - (Company Logo)
on Each Manhole/Joint Box Cover



Photo No. 12k - (Company Logo)
on Each Manhole/Joint Box Cover



Photo No. 12m - (Company Logo)
on Each Manhole/Joint Box Cover

Attachment 10
Photos of Services of HKT

Photo No. 12n - (Company Logo)
on Each Manhole/Joint Box Cover



Photo No. 12p - (Company Logo)
on Each Manhole/Joint Box Cover



Photo No. 12q - (Company Logo)
on Each Manhole/Joint Box Cover



Photo No. 12r - (Company Logo)
on Each Manhole/Joint Box Cover